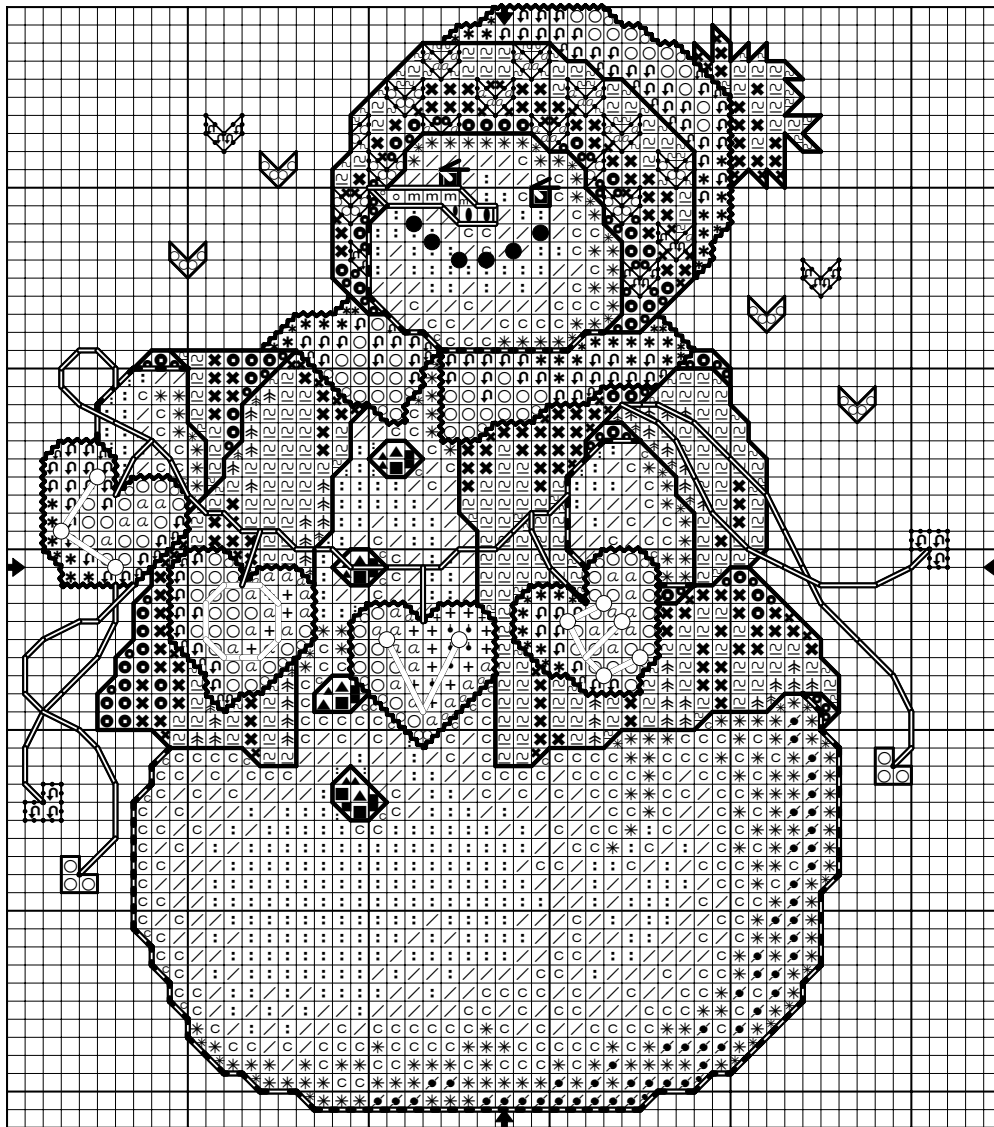


Floss and Symbol Listing

Cross Stitch - Use 2 Strands

Sym	DMC	Color
■	310	Black
▲	413	Pewter Gray-DK
●	414	Steel Gray-DK
*	318	Lt Steel Grey
○	415	Pearl Grey
/	762	Vy Lt Pearl Grey
:		White
●	336	Dark Navy Blue
✕	312	Med Navy Blue
∩	334	Baby Blue-MD
⊕	3325	Lt Baby Blue
*	498	Christmas Red-LT
↶	321	Christmas Red
○	666	Christmas Red-LT
α	892	Carnation-MD
+	893	Carnation-LT
•	894	Vy Lt Carnation
●	740	Tangerine
m	741	Med Tangerine
o	742	Tangerine-LT



©2008, The Vermillion Stitchery. All Rights Reserved.

Stitch Count

51 Wide x 61 Tall

14 Count, 3-5/8w X 4-1/4h in

16 Count, 3-1/8w X 3-3/4h in

18 Count, 2-3/4w X 3-3/8h in

\*Add 4-6 inches to each measurement for cut fabric size.

Father Time Snowman



Back Stitch - Use 1 Strand unless noted otherwise.

BS Sym	DMC	Color and Stitch Area
—	310	Black. Eyes and Coal Buttons
—	413	Pewter Gray-DK. Snowman's Chin, Hands, and Bottom
—		White. Eye Spots and "L O V E" Letters - 2 Strands
—	336	Dark Navy Blue. Hat Pom-Pom & Blue Hat Cuff; Jacket
—	814	Garnet-DK. Red Part of Hat, Collar, and Four Large Hearts
—	498	Christmas Red-LT. Hearts on Hat Cuff, Two Hearts on Strings and Two Hearts in Background
—	321	Christmas Red. Other Two Hearts on Strings and Other Hearts in Background
—	434	Lt Brown. Carrot Nose and All Brown Heart Strings

French Knots - Use 1 Strand

Sym	DMC	Color and Stitch Area
●	310	Black. Mouth Rocks - 2 Strands
○		White. Dots at ends of "L O V E" Letters - 2 Strands