

©2010, The Vermillion Stitchery. All Rights Reserved.

Floss and Symbol Listing

Cross Stitch - Use 2 Strands

Sym	DMC	Color
✕	335	Med Dark Rose
○	899	Rose-MD
◁	776	Pink-MD
m	818	Baby Pink
-	819	Baby Pink-LT
■	310	Black
+	413	Pewter Grey - DK
α	415	Pearl Grey
=	762	Pearl Grey-VY LT
•	1	White
*	758	Terra Cotta-VY LT
+	754	Peach-LT
o	948	Peach-VY LT
H	3345	Dk Hunter Green
	3346	Hunter Green
S	581	Moss Green
^	3348	Lt Yellow Green
⌒	435	Brown-VY LT
C	436	Tan
□	738	Vy Lt Tan

Stitch Count

55 Wide x 65 Tall

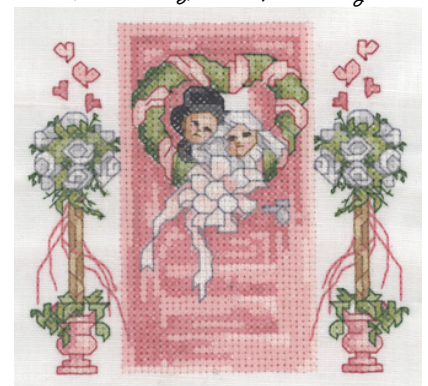
14 Count, 3-7/8w X 4-5/8h in

16 Count, 3-3/8w X 4h in

18 Count, 3w X 3-1/2h in

\*Add 4-6 inches to each measurement for cut fabric size.

Bride & Groom Doorway



Back Stitch - Use 1 Strand unless noted otherwise.

BS Sym	DMC	Color and Stitch Area
⋯	326	Very Dark Rose. Wreath Ribbons, Flower Pots, and Hearts
—	335	Med Dark Rose. Ribbons on Topiaries - 2 Strands
⚡	310	Black. Hat Outline
—	414	Steel Grey - DK. Bride's Clothing, Pink Bow, and White Topiary Roses
—	938	Coffee Brown ULT DK. All Eyes
—	434	Brown-LT. Bride & Grooms' Face Outlines, Noses, Mouths, and Topiary Trunks
—	3345	Dk Hunter Green. Green Wreath Parts, Leaves & Tendrils in Topiaries